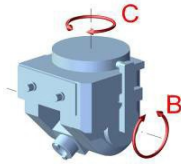


PILSEN

TOS KUŘIM



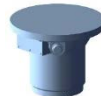
VK 5 Axis – ISO 50 A/B axis



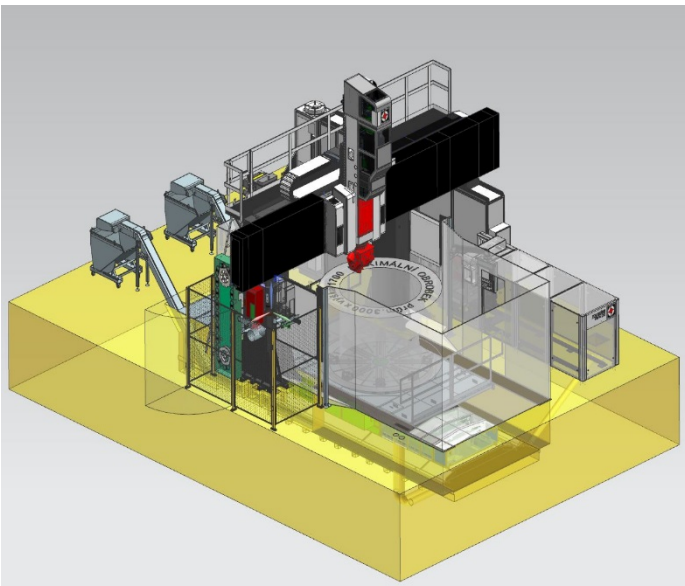
VP1 Angle – ISO 50 C axis



VA 1 Straight – ISO 50



VZN1 Turning – CAPTO C6



Base Machine	FRPNZQ 250 – VR/A2 5 Axis
Table Size	98.4”
Max Part Swing	118.1”
Max Part Height	70.8”
Chuck	4 Jaw Hydraulic Chuck-Self Centering
Axis Travel Y Working	153.5”
Axis Travel Y Total	221.3”
Axis Travel Z Ram	59.1”
Axis Travel X Table	98.4”
Table Speed	250 rpm
Table Power	144 HP
Live Spindle	6,000 rpm
Live Spindle Power	60 HP
Table C Axis	Continuous
Table Capacity	66,200 lbs.
Coolant System	290 PSI
ATC – Chain/Head Storage	40 tool holders and 4 adaptors
Control	Siemens 840 Dsl

Changeable Head List:

- VA 1 Straight – ISO 50
- VP1 Angle – ISO 50 C axis
- VK 5 Axis – ISO 50 A/B axis
- VZN1 Turning – CAPTO C6

Installation, Training, Parts and Service by Pilsen.